

# COLD SPRINGS ELEMENTARY

## Option R.1 - Realign, Relocate, Renovate

- New school in Marilyn Park/ Linda Vista or Lower Miller Creek

Missoula County  
Public Schools  
Facilities Strategic Plan

Cold Springs  
Elementary School  
Site Area: 6.76 acres  
Parking Spaces: 65

### Building Square Footage

Existing 51,382

### Total Project Cost

\$11,285,613

### Replacement Cost

\$11,285,613

Ratio 100%

Good  
Fair  
Poor

Replace

### Remaining Deferred Maintenance & Energy Project Costs

\$0

### Current Annual Energy Costs

\$46,571

### Potential Energy Savings

\$7,513

### Rental/Lease/Sale Income

\$0

Current Enrollment 480

Future Peak Enrollment 477

Capacity 450-500

Accessible Capacity  
450-500

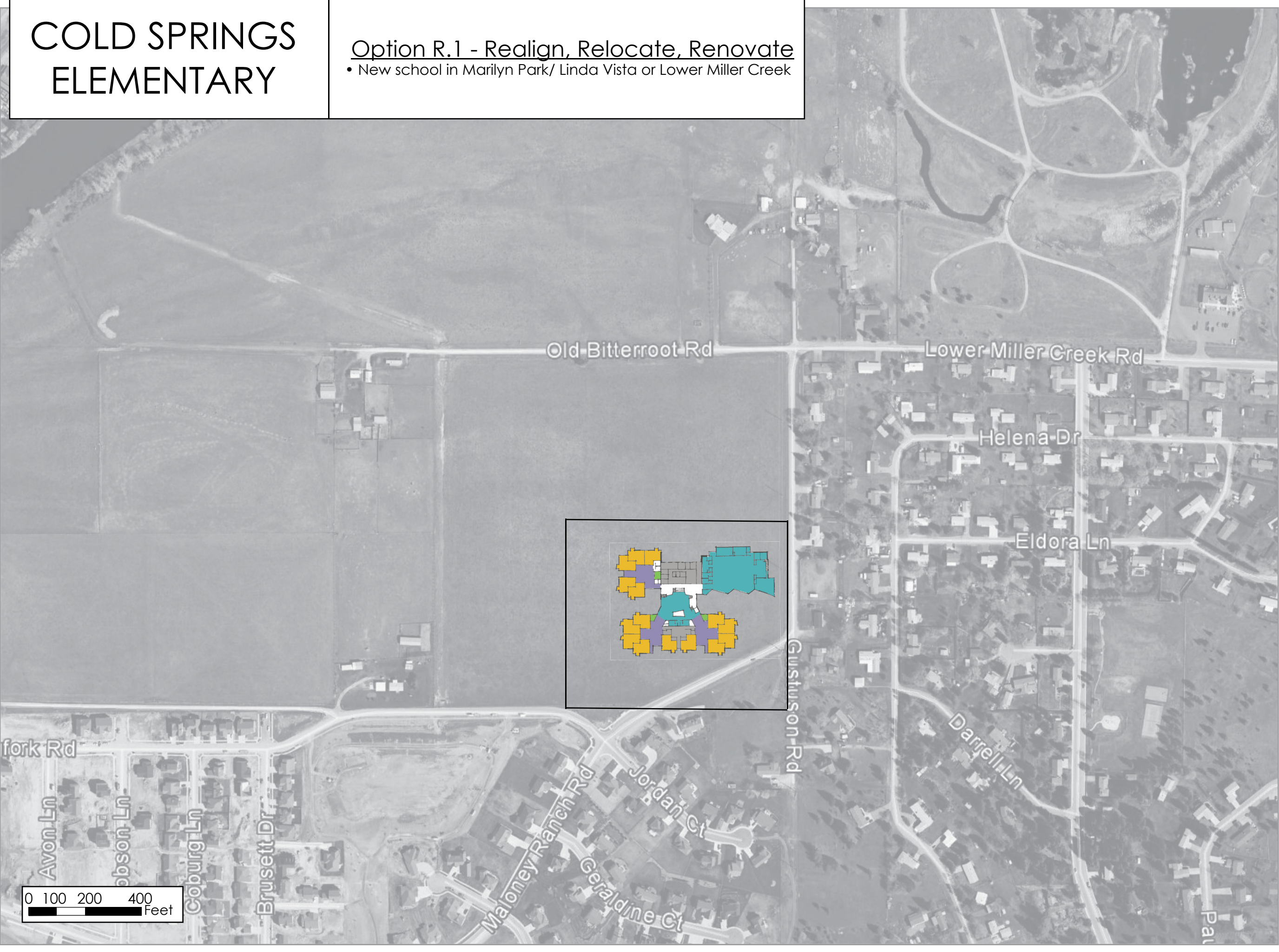
Accessible/Permanent  
Capacity 450-500

Costs include construction, demolition (where applicable),  
technology, furnishings, site development, design fees,  
site acquisition (where applicable), contingency and  
escalation to January 2017



Forward Thinking. High Achieving.

GROUP



0 100 200 400  
Feet